

NATIVE FISH OF THE COLUMBIA SLOUGH



Chinook salmon (up to 59" long)



Coho salmon (up to 43" long)



Cutthroat trout (up to 39" long)



Largescale sucker (up to 24" long)



Northern pikeminnow (up to 25" long)



Pacific lamprey (up to 30" long)



Peamouth (up to 14" long)



Prickly sculpin (up to 12" long)



Starry flounder (up to 36" long)



Steelhead (up to 47" long)



Three-spined stickleback (up to 4" long)



White sturgeon (up to 240" long)

Acknowledgements: This project was funded with a grant from Oregon Parks Foundation and support from City of Portland Bureau of Environmental Services.

Disclaimer: The distribution of some species of fish found in the Columbia Slough is limited by the levee system. The levee, which separates the Lower Slough from Middle Slough, (near NE 17th Ave.) is a major fish passage barrier.

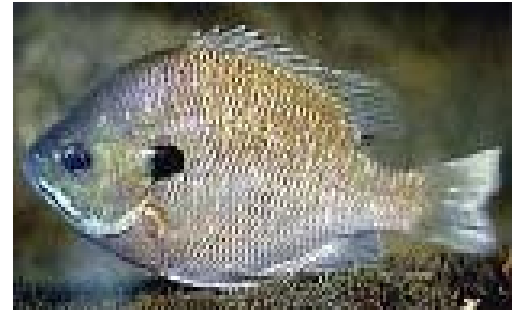
NON-NATIVE FISH OF THE COLUMBIA SLOUGH



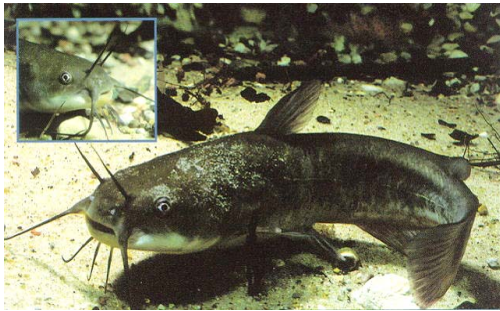
Banded killifish (up to 4" long)



Black crappie (up to 20" long)



Bluegill (up to 16" long)



Brown bullhead (up to 22" long)



Common carp (up to 48" long)



Goldfish (up to 24" long)



Largemouth bass (up to 38" long)



Mosquitofish (up to 2" long)



Pumpkinseed sunfish (up to 16" long)



Smallmouth bass (up to 27" long)



Warmouth (up to 12" long)



White crappie (up to 21" long)



Yellow bullhead (up to 19" long)



Yellow perch (up to 20" long)

Photo credits: City of Portland Endangered Species Program, Michael Gjernes, Ernest Keeley, Massimo Lorenzoni, Bob McDowall, Oregon Department of Fish and Wildlife, Thorke Østergaard, Robert Rice, Juan Antonio Delgado Saez, Geoff Steinhart, and Steffen Zienert.