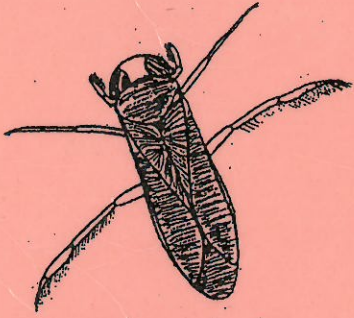
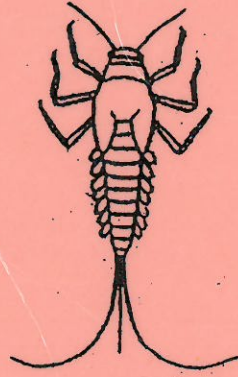


# Whitaker Ponds Macroinvertebrates

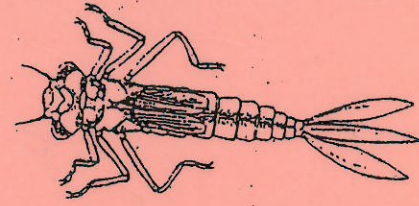
## Insects



water boatman



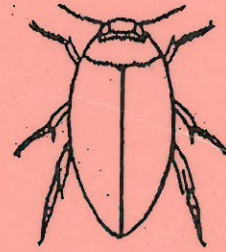
mayfly larva



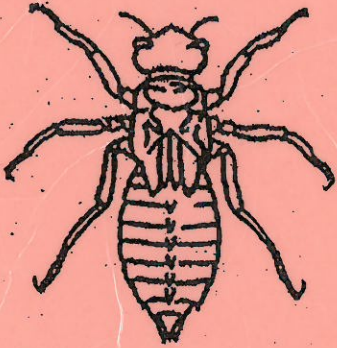
damselfly larva



crane fly larva



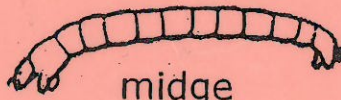
water beetle



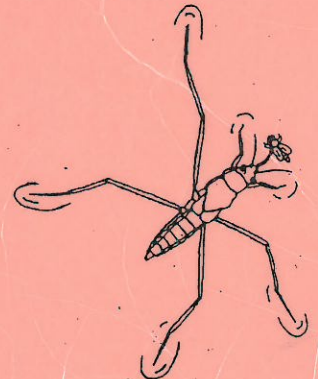
dragonfly larva



water scorpion

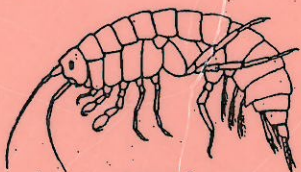


midge

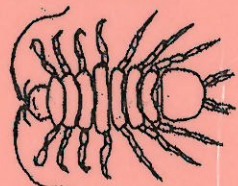


water strider

## Other Macroinvertebrates



scud



aquatic sowbug



aquatic worm



water mite



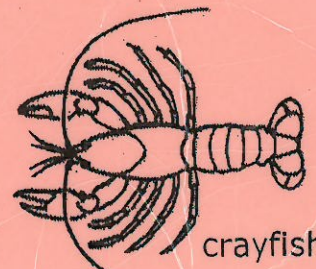
left handed snail



freshwater mussel



flat coil snail



crayfish